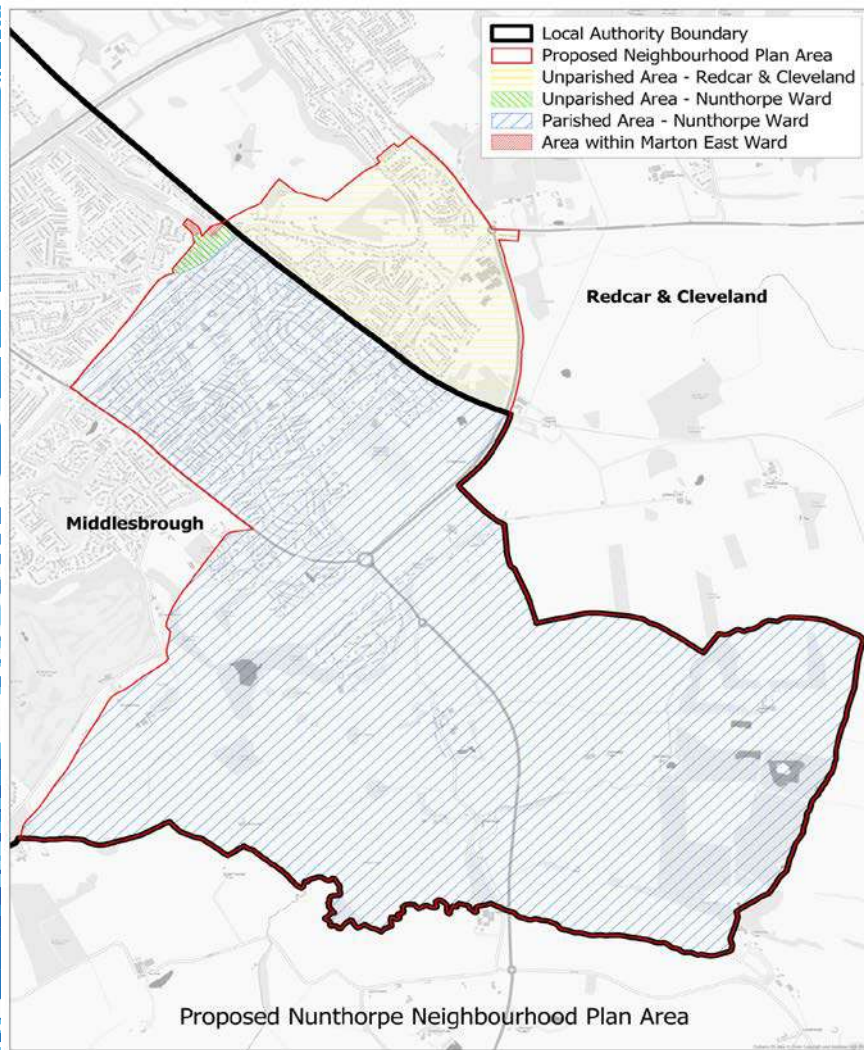


GREATER NUNTHORPE NEWS



Middlesbrough 

Service Area: PLANNING	Scale: 1:5,000	
Client Reference: 0246	Date: 11/05/2022	
Map created by: 0246/000246	Date: 11/05/2022	

© Crown Copyright and database right 2022. Ordnance Survey 100025282

Issue 9 - Winter 2022



GREATER NUNTHORPE NEWS

Greater Nunthorpe News is a quarterly magazine for our community supported by a partnership led by members of the Parish and Community Councils with funding from these and other bodies, including our advertisers to whom we are all grateful.

STOP PRESS

Community Centre

Following pressure at the recent Parish Council meeting (see NPC update). We hope that some progress will be made soon.

GNN – is it worthwhile?

Thanks to all who replied by email or submitted tokens to the boxes in the Naughty Habit and the Premier Store – and we thank Wayne and Sag for allowing us to do this. There was nobody at all who had any negative comments or voted 'red' on the GNN, There was complete support and many residents tell the Editorial team how much they enjoy the magazine and look forward to it. One great piece of feedback was from an older gentleman who delivers the magazine for Unique Leaflets. He told the Editor that it was a bit heavy but he said he was often waved away when delivering the usual flyers but was welcomed when residents caught sight of the GNN!

We did have one comment that expressed concern about whether the GNN can be recycled – it can – see Page 10 for a statement by County Print who continue to do a great job for us. The other issue was about the quality of the paper. We have reduced the quality a little but there are technical reasons why it can't have a thicker cover relative to the contents, and also cost reasons. We hope that the GNN will stand out in every way when it lands in your doormat!

Please keep writing to the Editor, and Editorial team, as it gives us great encouragement to continue producing this magazine for you the residents of Greater Nunthorpe



OurGreenways
Promoting Green and Healthy Living in Nunthorpe



**Nunthorpe
Institute**

Charity Number: 523379

The GNN is delivered by



www.uniqueleaflets.co.uk

Call 07817241226
or email
paul@uniqueleaflets.co.uk

CONTENTS

- Pg 4 Nunthorpe Parish Council Update
- Pg 6 Where is Nunthorpe?
- Pg 7 Neighbourhood Plan
- Pg 10 ourGreenways
- Pg 14 Nunthorpe Community Council
- Pg 14 Neighbourhood Watch
- Pg 15 Boulevard to nowhere
- Pg 16 Community Centre
- Pg 17 Jubilee Clock Latest
- Pg 18 Church Messages
- Pg 23 Remembrance Sunday
- Pg 26 Schools
- Pg 30 Nunthorpe History Group
- Pg 35 Letters & Comments to the Editor
- Pg 38 Contact Details
- Pg 39 Word Search



Spring 2023 Issue Copy by 6th February 2023

Contact Adrian Walker for copy or advertising:

Mob: 07800 794949

greaternunthorpenews@gmail.com

Or post to:

7 Muirfield, Nunthorpe, TS7 0JN

This magazine has been produced in partnership with funding from Nunthorpe Parish Council, Nunthorpe Community Council, ourGreenways and of course, our advertisers - thank you.

We are seeking volunteers for stories, pictures, invoicing, social media and website management. Young and old welcomed!

Contact Wade: 07976 363553 to greaternunthorpenews@gmail.com

NUNTHORPE PARISH COUNCIL UPDATE

The Parish Council has met three times since publication of Greater Nunthorpe News in Summer 2022 – on 21st July, 29th September and 17th November.

COMMUNITY CENTRE

As previously reported in GNN, the Parish Council wrote to Mayor Andy Preston on 8th July expressing alarm that “a Community Centre for Nunthorpe seems as far away as ever” – after Middlesbrough Council confirmed on 17th May that a halt had been called on progress. This was explained as being due to flaws the Council had identified in the processes the Council had established six months earlier. The Mayor replied that *“there should be no doubt that this project can still happen very quickly – in spite of some Council errors in the procurement process”*.

The Parish Council was sceptical about timescales, having seen no evidence of progress happening *“very quickly.”* The Parish Council was also increasingly concerned that adequate funding would be available in the context of particularly high levels of inflation in the construction industry, and in the context of reports about considerable financial pressures being faced by Middlesbrough Council. As a report to Middlesbrough’s Executive on 6th September about the Community Centre appeared to raise further issues, it was agreed to seek clarification and confirmation from Middlesbrough’s recently-appointed Director of Finance about the sources of funding, and to invite the Mayor to attend a meeting of the Parish Council.

The Mayor attended a Parish Council meeting on 17th November. Parish Councillors articulated frustration about the lack of progress, and the Mayor reiterated his determination that there will be decisive action towards a Community Centre during his period in office. He stated that Officers are currently working with him on how to move forward in a way which balances various community and professional perspectives, and he undertook to keep the Parish Council informed.
(see picture later in GNN)

NUNTHORPE DEVELOPMENT

The letter to the Mayor of 8th July also expressed the concerns of the Parish Council about the unexplained decline of liaison between Middlesbrough Council and Nunthorpe Parish Council, after a period of constructive progress towards implementation of the Mayor’s “Nunthorpe Nineteen” commitments. The Parish Council pointed out in the letter that the current lack of coordination also undermines the coherent planning required to develop the Nunthorpe Neighbourhood Plan. The Mayor’s reply confirmed that, since his election, there had been a period of significantly improved joint activities, but the Mayor’s response did not provide an answer to the question about why this partnership had not continued.

In the hope of resurrecting productive dialogue about the development of Nunthorpe, the Mayor was invited to the November meeting of the Parish Council. Meanwhile, the Parish Council had been informed of approval to proceed with a Neighbourhood

Plan for Nunthorpe. *[The approved area is identified in this edition of GNN under the heading "Where is Nunthorpe?" and an update on the Neighbourhood Plan is also included].* As the neighbourhood planning process involves a schedule of deadlines, the Mayor's attention was drawn to the importance of coordinating the development of the Nunthorpe Neighbourhood Plan with the related review of the Masterplan for Nunthorpe Grange – both within the wider context of the initial stages of revising the Local Plan for Middlesbrough. Parish Councillors explained the importance of using the potential of all planning opportunities to control housing development in Nunthorpe. The Mayor undertook to arrange for a meeting of the Nunthorpe Vision Group.

CONTINUING PARISH PROJECTS and ACTIVITIES

Trees, Flowers, and Waste Management

The Parish Council has been kept informed about the bureaucracy required to make the area at the entrance of Church Lane sufficiently safe to enable public access to "Jubilee Wood". Middlesbrough Council has been asked to replace trees across the Parish which are diseased, and to allocate some land for allotments. Purchase of a large "Train" recycling bin at the Avenue Park was confirmed, and locations were identified for some additional standard bins.

Public Rights of Way and Bridleways

The Parish Council was pleased to hear that Middlesbrough Council's Executive had decided to seek formal recording of the "Green Link" as a public right of way. *[This is explained in more detail in a later article entitled "The Green Link."]*

Roads and Footpaths

The Parish Council expressed concern to Middlesbrough Council and Cleveland Police about zealous enforcement on Dixon's Bank north of Guisborough Road – despite limited signage informing motorists of the new speed limit. On the other hand, residents had seen little evidence of enforcement where speeding is most alarming – on Dixon's Bank south of Guisborough Road, on Guisborough Road, on Stokesley Road or on The Avenue. Officers did agree to undertake an automatic traffic count on Stokesley Road, and to provide planters on the pedestrian / cyclist boulevard at the Medical Centre, in order to prevent danger to walkers from misuse by motorists. Roads and footpaths particularly blighted by potholes were identified, with Middlesbrough Council agreeing to give priority to Nunthorpe Village.

Crime and Anti-Social Behaviour

Representatives from the Police attended September's meeting to provide an update. Although there had been incidents in a few specific locations, the level of reported crime and anti-social behaviour had remained low. Residents were encouraged to contact the PCSO or wardens about their concerns, and to provide photographs of inappropriate parking. The Parish Council also encouraged residents to support the Marton and Nunthorpe Neighbourhood Watch Facebook Group.

Partnerships

The Parish Council was pleased to contribute to the Remembrance Sunday Celebrations at St Mary's Church, and to the Children's Picnic at Nunthorpe Methodist Church.

PLANNING ISSUES

Several development proposals are being monitored by the Parish Council, including at Ford Riding Centre, Nunthorpe Hall Farm, the Brethren site on Gypsy Lane, and southwest of Grey Towers Farm. The Parish Council continues to be concerned about the low priority given to several cases of enforcement brought to light by residents, and drew this to the Mayor's attention.

CONSTITUTION and ORGANISATION

Governance Review

The main outcome of the Community Governance Review was welcomed because Middlesbrough Council agreed to endorse the Parish Council's proposal to extend the Parish boundaries to include YewTree Grove and Milan Grove. An incidental result was the decision to reduce the number of Parish Councillors from 11 to 7, on the basis that more residents will apparently be attracted to serve if there are fewer volunteers on the team.

Parish Councillor Mike Eccles

At the conclusion of the meeting on 21st July, Mike Eccles announced his decision to resign as a Parish Councillor. Members acknowledged his contributions to the Council – particularly the development of the webpage and the review of Policies, (including a complex update of Standing Orders.)

All residents are welcome to join us for the next meeting at Chandler's Ridge Primary School on Thursday 19th January at 7.00pm

WHERE IS NUNTHORPE?

At last, it seems that we have an official answer to this question.

Our two local authorities – Middlesbrough and Redcar & Cleveland – have formally accepted the suggestion about which Nunthorpe Parish Council consulted GNN readers some time ago.

It has now been agreed to establish the "Nunthorpe Area" for the purpose of our Neighbourhood Plan as including –

- The current area of Nunthorpe Parish Council, extended to include Milan Grove, Yew Tree Grove, and all of the site of the Brethren Church beside Gypsy Lane Station.

[Middlesbrough Council proposes to also amend its ward boundaries, so that Nunthorpe Parish and Nunthorpe Ward will constitute exactly the same area.]

- The southern part of the Ormesby ward of Redcar & Cleveland, along a line connecting Gypsy Lane Station, West Field Wood, the intersection of Woodley

Grove / Rothesay Grove, and Charnwood Drive; then south on Ormesby Bank and along the Nunthorpe Bypass until meeting the railway track at the Middlesbrough Council boundary.

Regular readers will recall that Guisborough Town Council asked that the boundary of the "Nunthorpe Area" should not incorporate the most rural part of Nunthorpe – ie to the east of the Nunthorpe Bypass and south of the A171 to Guisborough. However, although we still await an authoritative ruling on this eastern front, in relation to all our other borders we now have a clear answer to the question of "where exactly is Nunthorpe?"

The Proposed Nunthorpe Neighbourhood Plan Area map is on the cover

NEIGHBOURHOOD PLAN

We shall be holding some drop in events in the first quarter of 2023 so you can see what we have been doing. Most importantly we want to give you the opportunity to express your views and ask questions. These events will be easily accessible and held at different times to maximise residents opportunities to participate. Young people will also have an opportunity as well. We will publicise dates and varied locations in shops, notice boards, schools and social media.

Good news and next stages

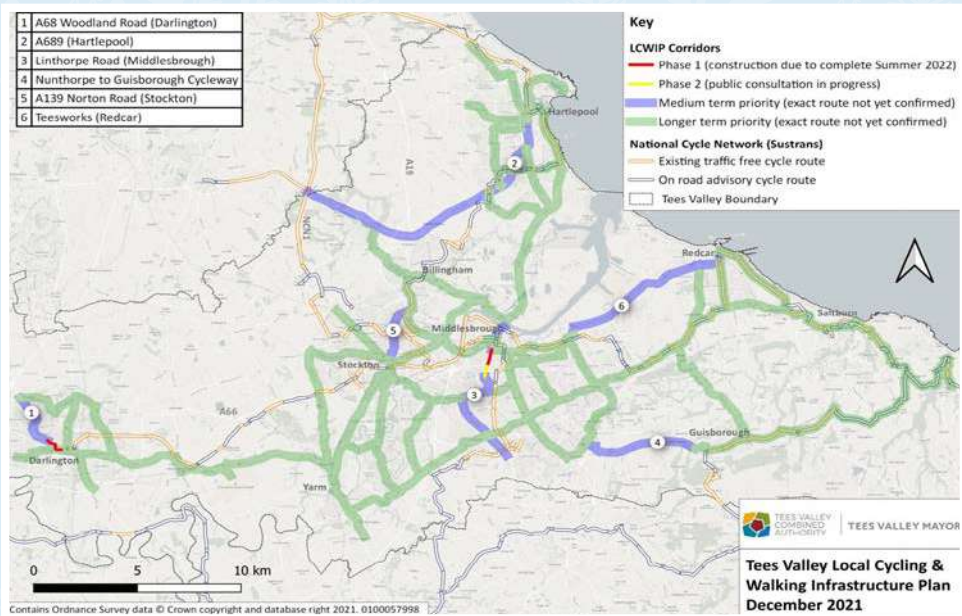
We are delighted to report that the Parish Council bid for a **£10,000 grant** from Locality has been successful. This bid will support the development of the Neighbourhood Plan (NP) for Greater Nunthorpe. We had to include in the bid costs for various support including consultants on local Neighbourhood Planning and on Consultation/PR, as well as room hire, leaflets/surveys etc. We already have a baseline study (paid for by MBC) as part of Nunthorpe Vision; the associated work of council officers and community representatives; the history of consultation of residents on what the NP area should be; our consultation with young people at the Academy; the substantial work done by our predecessors on design codes etc; and finally, our community engagement through GNN over the last two years.

We should, with the consultants' help, be able to make rapid progress before the end of March when the grant should be spent. However, the work will not be complete by then but with the support of the community, and a potential further grant, we aim to be able to complete the work and be able to play a key part in shaping the Local Plan that Middlesbrough Council is developing (which will not be completed until after the local elections in May).

Path/cycle/bridleway Nunthorpe to Pinchinthorpe and beyond.

The TVCA Transport Officer has provided this quote:

'Progress is continuing towards the delivery of the missing link in the cycleway



between Nunthorpe and Guisborough. Tees Valley Combined Cycle Authority and Redcar & Cleveland Borough Council are currently finalising agreements and plans with affected parties before a wider public consultation will take place early in the new year'. (see Route 4 - taken from)

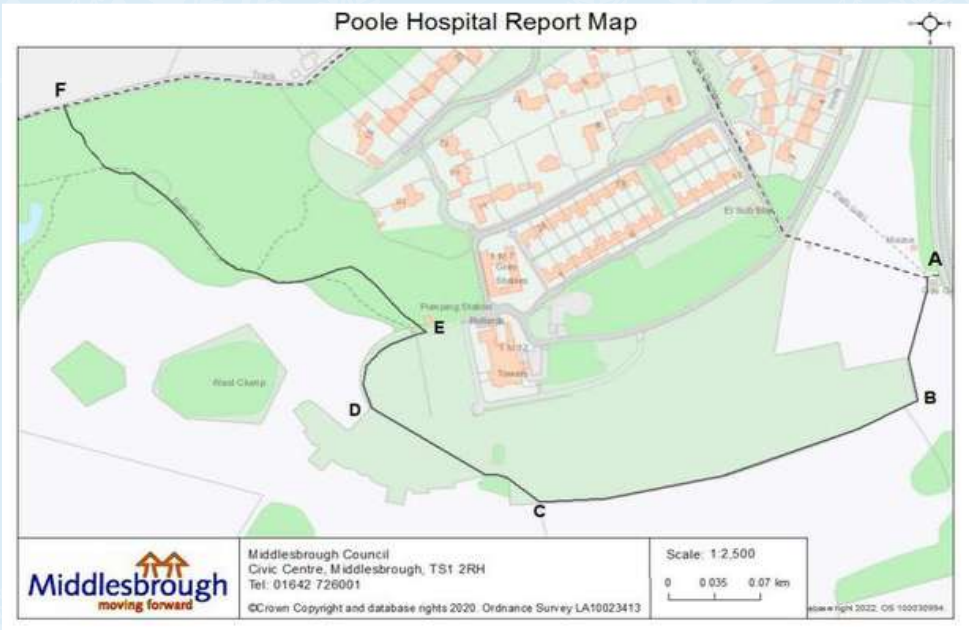
www.teesvalley-ca.gov.uk/wp-content/uploads/2022/01/Cycling-and-Walking-Brochurespreads-1.pdf

Our understanding is that there will be some form of Pelican crossing on the bypass to cross from one side of Morton Carr Lane, and this will lead down to a point adjacent to the signed automated crossing and will potentially use some of one farmer's land (agreed) and some of Network Rail land which needs to be surveyed. Whilst we can't see any objections being forthcoming, and we have heard of none so far, it is usual to do a consultation in these matters to ensure that any potential objections can be raised and dealt with.

Indeed, Tom Hind Chief Executive of North Yorks Moors National Park Authority, who met the Editor recently, said "We're really supportive of efforts to complete the cycleway from Nunthorpe to Guisborough. As a key gateway to the North York Moors such a link would massively improve accessibility to people in Nunthorpe and Middlesbrough to the National Park, whilst lowering the environmental impact of enjoying this wonderful landscape".

Green Link

A popular walking route in Nunthorpe looks set to finally be formally recorded as a Public Right of Way by Middlesbrough Council, ending almost twenty years of uncertainty and confusion for Nunthorpe residents.



The route known as the 'Green Link' runs from Nunthorpe Bridleway through Fishponds Woodland, part of the now Grey Towers Park Estate, to Old Stokesley Road. The popularity of the route goes back to when the buildings were in use as Poole Hospital. Walks around the grounds were popular with patients, staff and visitors to the site, along with residents of the growing Nunthorpe population able to enjoy the scenery and buildings in surrounding countryside.

Following the closure of Poole Hospital and decline of the buildings, the estate was promoted as a development opportunity by the NHS. The land was purchased in the early 2000's by a housing developer for development of a residential estate on the former hospital site.

Part of the development proposal included the continuation of the Green Link by creating a suitable route in a landscaped setting linking the bridleway to the north of the site with Old Stokesley Road and Nunthorpe Village. This specifically required a Public Footpath to be provided as part of the development process, known as a Section 106 Agreement.

Although the route of the Green Link was agreed and in use by the public, maintained by Middlesbrough Council from 2004, the process to formally record the route was never completed.

Middlesbrough Council Executive Committee approved the recommendations put forward at an Executive meeting on 18th October 2022 to commence the process of formally recording the route through a Definitive Map Modification Order (DMMO). The recording of a Public Right of Way through a DMMO is a two-stage legal process (making and confirmation), governed by Schedules 14 and 15 of the Wildlife and Countryside Act 1981.

Stage 1 involves the Council making and publishing the order which then triggers a six-week period to invite objections. This process is anticipated to commence by Middlesbrough Council in November 2022, followed by notice of a legal order being published and advertised in December 2022. The second stage requires the order to be confirmed. If no objections are made or any objections withdrawn, the Council itself may confirm the order. Otherwise, the order must be submitted to the Secretary of State for confirmation. The Secretary of State will usually proceed to hear all representations by way of a public enquiry before a decision to confirm or decline an order is made.

Nunthorpe Parish Council and Our Greenways welcome the decision to proceed to formally record this public right of way which provides the opportunity to improve signage, have a recorded route which is clear for walkers to know where they do and do not have a right to walk.

OURGREENWAYS

www.ourgreenways.org



Triangle Wood - some progress has been made and the MBC representatives who assisted in the provision of a grant, had an insight into the project when they visited the wood recently.

There was a slight stall as it was discovered that a tree felling licence from the Forestry Commission was required but this has now been applied for by ourselves, MBC and the contractor. We hope to resolve this very soon. We have also just received news that we have been granted **£1000** by the Jack Brunton Foundation for which we are very grateful.

We are keen to plant more trees to replace, as soon as possible, the diseased and dangerous trees that will have to be taken down in the wood.

GNN SUSTAINABILITY



With welcomed feedback on the GNN booklet from the previous edition about the production, readability and whether it is recyclable or not.

Please find some information below:

Since the GNN started, it has primarily been printed on 150gsm silk, depending on the page count. There are some technical limitations to page counts with saddle stitched booklets which are taken into account. The aim was always to produce a quality publication which stood out, but this does come at a slightly higher cost. Taking into account rising costs at the moment, the GNN moving forward will be produced on 130gsm. Either which way, the paper used is sustainably sourced from an FSC approved supply chain.

From day one, the GNN has had a 15% overall background tint to assist with reading for people who are dyslexic. This has now been increased to 25%.

As for recycling, every edition is and will be, fully recyclable within your recycling waste.



Serving Nunthorpe since 2008



Find your cosy this winter with
HARVEY BROOKS

www.harveybrooks.com

countyprint

We love to print

DIGITAL, LITHO & WIDE FORMAT PRINT

01642 225867



11/12 Collingwood Court, Riverside Park, Middlesbrough TS2 1RP

Email: sales@countyprint.co.uk | Web: www.countyprint.co.uk

FAST FRIENDLY SERVICE FROM A FAMILY BUSINESS SINCE 1981



Marton & Nunthorpe Neighbourhood Watch

ANTI-SOCIAL BEHAVIOUR

To report to Cleveland Police contact 101 or via their on line reporting:
www.cleveland.police.uk/ro/report

To report to Middlesbrough Council ASB:
asbunit@middlesbrough.gov.uk

To report to Middlesbrough Council Street Wardens
(01642) 228500

ANYTHING TO REPORT?

If you have anything you feel needs reporting, please use the following contact details or on facebook:

Join Marton and Nunthorpe Neighbourhood Watch:

www.facebook.com/groups/1135073343930661/?ref=share

Middlesbrough Council

Out of Hours Emergency Contact Number: **01642 726050**

Highways England – If the obstruction is on a motorway or an A road they manage in England **0300 123 5000** and info@highwaysengland.co.uk

Business &
IP Centre
Tees Valley



Joe Faulkner
Founder of Krio Kanteen

FOR EVERY BRIGHT IDEA, EVERYWHERE



Join a thriving business
community in your local library

At the Business & IP Centre Tees Valley, we are here to help you start, run and grow your own business with tailored one-to-one support, access to over £5million worth of resources, and a wide variety events and workshops.

Get in touch today. Visit us at your local library, or online at

stockton.gov.uk/BIPC

BRITISH
LIBRARY



NUNTHORPE COMMUNITY COUNCIL



We continue to support the Parish Council and await clarification of the role of Community Councils as MBC sets out the future of governance, and also faces financial stresses which may limit support. We are very clear that in the meantime we will continue to work together closely with regard to issues like GNN, the Neighbourhood Plan, the Community Centre and so on. We have participated in and supported litter picks (we have equipment if anyone wants to borrow to do a very local litter pick).

We will be combining with Middlesbrough Erimus Rotary Club in supporting Middlesbrough's children most in need this Christmas, donating to three local charities – the "Kid's Out" Toy Box Appeal, the Salvation Army Toy Appeal, and the Cause Foundation Christmas Hamper Appeal. As a first step, we have undertaken to join a team collecting at the Parkway Shopping Centre on the morning of Friday 9th December.

We have a smaller active Executive due to a resignation and one member's illness – volunteers welcome.

NEIGHBOURHOOD WATCH

The "Marton and Nunthorpe Neighbourhood Watch" Facebook Group is going from strength to strength.

We currently have over 1100 members and would like to grow this number to include as many people as we can who live in the area and use social media.

As always we recommend that all incidents are reported through the proper channels.

If you see anything relating to Crime, ASB, lost or found animals and traffic issues that would interest our community, please can you share or post something on the Facebook page:

www.facebook.com/groups/1135073343930661/?ref=share

Crime is relatively low in this part of South Middlesbrough and we wish to continue to play our part in keeping it that way.

We are still waiting on a date to be confirmed for the CCTV cameras at the Southern Cross Junction to be upgraded so that they can survey the whole of that area including Stainton Way.

The installation of CCTV at the Southern Cross Junction has been set to the first quarter of 2023.

The range and efficacy of CCTV is an ongoing concern to us.



Adrian Walker Leader
Marton and Nunthorpe
Neighbourhood Watch
Facebook Group



'Boulevard to nowhere': Motorists driving down footpath abusing pedestrians at Nunthorpe surgery' – Gazette headline 3rd November



The NPC stated "We share the widespread lack of understanding about why a very wide boulevard to nowhere was constructed where it is. The parish council warned against this at the planning stage, and parish councillor Morgan McClintock personally pleaded with the planning committee to relocate the footpath for pedestrians - but our warnings were overruled at the time." Due to representations Middlesbrough Council has now placed planters which should stop drivers taking the wrong turn. Parish Councillor Morgan McClintock welcomed Middlesbrough Council's donation of two planters and the grant from the Parish Council towards filling them with shrubs and plants. He said that the focus is now on encouraging Middlesbrough Council to trim the hedges at the access road junction to improve the line of sight for motorists exiting onto Stokesley Road."

The Lakeman Suite at the GP Surgery

Patients at the new GP Surgery will have noticed the signs the "Lakeman Suite' . The sign points to the room that is a meeting/conference room and is named after Dr Mick Lakeman who retired from the practice but worked over many years to get an improved medical facility for Nunthorpe patients. He said " The naming of the suite came as a complete surprise. I feel very honoured but also a bit embarrassed! The whole project was a team effort to which Lisa's [Lisa Fox, Practice Manager] contribution was massive"



Footnote: We are also pleased to report that the Nunthorpe History Group (thanks for the idea from Colin Hurworth one of our members) and the partners at the practice have agreed to establish a history of Nunthorpe cabinet in the waiting area. We hope to have more news for the next issue but let us know if you have any suitable items for display.

Community Centre

The proposal for a Community Centre by a consortium led by the Parish Council, with the Community Council and the Nunthorpe Institute, commissioned a costed design and floor plan and published these on the website and Facebook. But as many GNN readers don't use social media, we publish them here for information though you will have read earlier that the Community Centre is on hold.

www.nunthorpepc.org.uk/community-centre-bid-documents





THE NAUGHTY HABIT

CAFE & BAR

The Arcade, Nunthorpe Shops
Guisborough Road,
Nunthorpe,
Middlesbrough
TS7 0JS



 07385 295266

 thenaughtyhabit@gmail.com



Find us on Facebook & Instagram



JUBILEE CLOCK LATEST

'We are ironing out the last few details before placing an order for the commemorative clock which will be positioned on the gable end of the station house. Work is ongoing to procure a reputable person to install the clock.'



Picture for illustration purposes only

Sapphire Print Solutions Ltd | 4 River Court | Riverside Park | Middlesbrough | TS2 1RT

Sapphire

Print Solutions

Tel: 01642 309700

Mobile: 07973 325299

www.sapphireprint.co.uk

Proud to be a
Schools North East
Commercial Supporter



 **KYOCERA**
Document Solutions

Invincible
Ranked No.1 for Reliability



CHURCH MESSAGES

Greetings from Nunthorpe Methodist Church

There are lots of things happening at Nunthorpe Methodist Church in this busy season.

Warm Welcome Tuesdays is a new initiative starting at our Church in November and continuing until 28th March. We are aware that there are many people who feel a little lonely in the winter months and still others who are struggling to keep warm. Why not come along to us on a Tuesday between 10:00am and 4:00pm. Bring a packed lunch (tea and coffee provided) and join in with some activities (if you would like to) or simply sit and chat. Stay all day and enjoy some table top games, or just drop in for an hour or two. Come on your own or bring a friend. Everyone is welcome.

The Christmas Fayre is on Saturday 26th November from 10.00-12.30. There will be cakes, bakes, stalls, tombola and there's even going to be a Snow Globe! A fun event with something for everyone, so bring the family.

Carol Service on the Lawn! 24th December at 6:30pm. Come and sing some familiar Christmas carols on Christmas eve and hear the Christmas story told afresh, all in the open air. It will take place on the lawn in front of the church (or inside if the weather is atrocious). Bring your family and friends and make us part of your Christmas celebration.

Sunday Worship:

4th December at 11:00am

11th December at 11:00am

18th December at 11:00am

25th December at 9:30am

1st January at 11:00am

8th January at 11:00am

Christingle Service with Mrs R Lewis

Sunday worship with Ms K Dykes

Nativity Service with Revd. D Godfrey

Christmas Celebration Service with Revd D Godfrey

(NB.) This is a joint Service at Marton Methodist Church

New Years Day Service with Revd D Godfrey

Covenant Service and Holy Communion with Revd D Godfrey

I hope it goes without saying that everyone is welcome to our public worship at 11:00am every Sunday morning (9:30am at Marton Methodist on Christmas day) and to all our public events. In the darkness of this season the church gathers in celebration because we truly appreciate the light of Christ coming into the world. May our celebration of Christ's coming fill us with hope for ourselves and for our world.

With all good wishes in this special season,

Revd. David Godfrey

david.godfrey@methodist.org.uk

www.memc.uk

01642 286053



The **Methodist Church**





carehome.co.uk Review Score
for Nunthorpe Oaks Residential Care Home
34 reviews
Based on independent review scores in the last 24 months at the time of going to print.



Sanctuary Care
enriching lives

Nunthorpe Oaks Residential Care Home

 residential  respite



unveiling
our extensive
refurbishment
soon!

At **Nunthorpe Oaks** Residential Care Home, we take pride in enriching the lives of our residents and those joining us for respite care breaks.

“ Always find staff helpful, kind and caring. Cannot fault. Thank you for all you do. Reassuring to know my grandad is being looked after! ”

Independent **Carehome.co.uk** review – June 2021

Call our dedicated **Enquiry Support Team** advisors on free-phone

01642 692 094

Nunthorpe Oaks
Residential Care Home

114 Guisborough Road | Nunthorpe |
Middlesbrough | TS7 0JA

sanctuary-care.co.uk

Sanctuary Care Limited and Sanctuary Care (North) Limited are subsidiaries of Sanctuary Housing Association, an exempt charity



Latest News from St Mary's Church, Nunthorpe

As we look forward to Christmas at St Mary's we are hoping to welcome visitors and guests as well as our regular congregation to our Christmas celebrations. Here are the services that we are expecting to hold in the run up to Christmas.

Sunday 11th December

Christingle - 4pm - Church

Join us to experience the magic of the Christingle service with candles, oranges, sweets and excited children! A collection will be taken for the Children's Society.

Sunday 18th December

5:30pm Carol Service - Church

This is a more traditional service which offers the chance to hear the Christmas story unfold through readings and carols.

Christmas Eve

On Christmas Eve we are offering two Crib Services to try to avoid overcrowding.

4pm Crib Service 1 - Church.

5.30pm Crib Service 2 - Church

Both services tell the Christmas story in a way that appeals to all ages with plenty of traditional Christmas carols. Children are very welcome to dress up as one of the characters from the Christmas story.

9pm Midnight Mass - Church

Our first Communion of Christmas is at the earlier time of 9pm and will finish just as midnight comes in Bethlehem!

Christmas Day

10am Family Eucharist with Carols

Our Christmas Day service offers another chance to celebrate the good news of the Christ child together.

For up-to-date information on everything that's happening at St Mary's please do look at our website www.stmarys-nunthorpe.org

May the joy and peace of the Christ Child be with you and all those whom you love this Christmas.

Revd Tessa Stephens, Vicar

T: 01642 285413 www.stmarys-nunthorpe.org

tessa.stephens@btinternet.com



Now recruiting:

- Expert storytellers
- Dedicated homework helpers
- Professional packed lunch makers

Life Changers



Fostering isn't always easy, but it's those tender moments that make it all worth it.

To enquire about becoming a Foster Carer call 03452 660 272.



**Five
Rivers**®

Turning children's lives around
five-rivers.org/fostering

St Bernadette's Church

Dear Friends,

I've been invited to write a few words by way of introducing myself. I'm Canon John Lumley and I'm the new parish priest at St Bernadette's Church on Gypsy Lane. I'm a Middlesbrough lad (born in South Bank, brought up in Teesville and Normanby) and I went to university at Durham and then London. Before becoming a priest, I worked as a teacher in Newlands FCJ School in Middlesbrough and also, as a priest, taught in our regional seminary, Ushaw College (Durham), which has sadly now closed (nothing to do with me teaching there!).

I've worked as a parish priest in Hull, York and Redcar and just this August moved "over the hill" to Nunthorpe from Ormesby, where I spent the last very happy 8 years. The parishioners here have given me a really warm welcome, for which I'm very grateful. AS well as being a parish priest, I also have responsibility within Middlesbrough Diocese for the "department" of Christian Discipleship, which covers areas such as Prison and Hospital Chaplaincies, Marriage & Family Life, LGBT+ ministry, Caritas (our social outreach here at home to those living with poverty in its many forms), amongst other things.

As I write, it's November. Just as nature is definitely telling us it is the end of the year, so also our Scripture readings at Mass have an "end of the world" feel to them at the moment. That sense of endings, of loss and sadness, is expressed of course most poignantly nationally in our Remembrance Day services last weekend. The photo here is of this year's annual Remembrance Service held at Smith's Dock Park in Normanby, which I've been privileged to lead for a number of years.

Paradoxically, at least in parish terms, there's a sense of new beginnings – of getting back to normality and resuming life more fully after Covid. So we're restarting things which had been cancelled or suspended due to Covid, such as Children's Liturgy during our Sunday Mass. And we have a new set of altar servers who are getting very rapid "on the job training"! Even the little things, like having teas and coffees every Tuesday, and after our main Sunday Mass once a month, and our Soup Lunches after our Friday 12 noon Mass during Advent. We're planning a Children's celebration of Christmas at 5pm on Christmas Eve, and the Silverwood Band Concert on 16 December in the church. All things which we missed during Covid. Small things, maybe, but amidst the dying back and shortening days of autumn heading into winter, I am always grateful for any signs of new life, of hope, and promise of light to come.

If it's not too early, may I wish you and yours light, joy and peace this Christmas.

Canon John Lumley



REMEMBRANCE SUNDAY

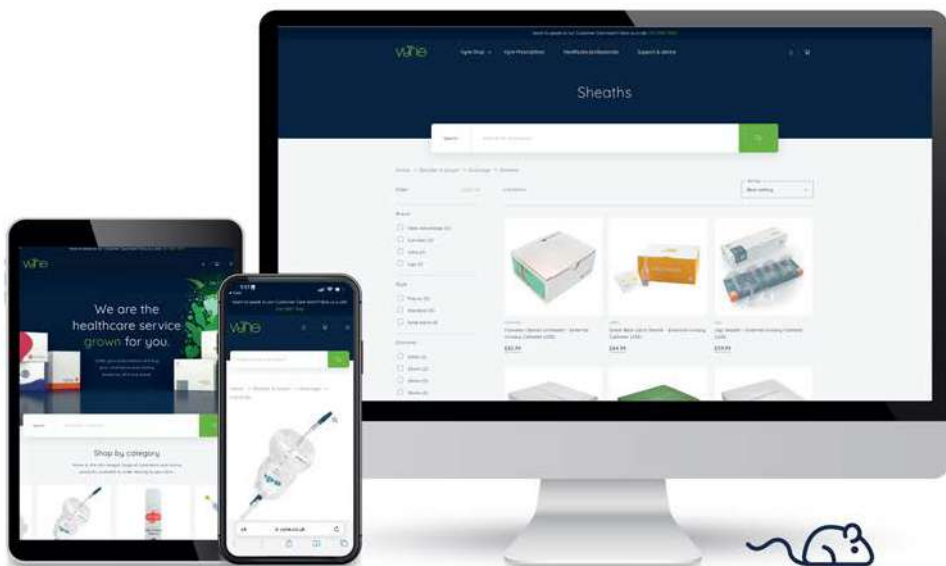
There was a great attendance for the service at the World War 1 Memorial, and laying of wreaths, prayers, and the Last Post followed by a two minute silence. The Vicar Tessa Stephens led the procession followed by beavers, cubs and Scouts to the Lych Gate of St Mary's Church where there was a short service and wreath laying at the World War 2 Memorial, before a service in the church.



(Look out for information on the memorials and the church through Nunthorpe History Group)



vyne has the UK's largest selection of medical appliances available to buy online.



www.vyne.co.uk

Offering hundreds of medical devices, continence products, stoma items, dressings, bandages and care accessories, available to buy online through Vyne.



Nunthorpe Nurseries aim is to provide the highest quality of childcare in an environment that is safe, exciting and nurturing.

To ensure that we fulfil this aim we will:

- Promote excellent working practices via committed and skilled staff.
- Provide safe happy surroundings where the children will have the opportunity to develop a positive attitude to learning.
- Provide optimum conditions where the children can learn, have fun and develop new skills to reach their full potential.
- Work closely with parents and carers to create a loving home from home atmosphere to ensure a consistent and caring approach with each child.
- Provide optimum conditions where the children can learn, have fun and develop new skills to reach their full potential including the opportunity to take part in signing tots, Spanish, music, dance and laughter yoga sessions.

Nunthorpe Children's Day Nursery

The Crescent, Nunthorpe, Middlesbrough TS7 0JW

Tel: 01642 322580



SCHOOLS

At the heart of our community ...The Avenue Primary School



The Avenue,
Nunthorpe,
Middlesbrough,
TS7 0AG
Tel: 01642 318510
Email: avenueprimary@mcschools.org.uk

We Learn, We Grow, We Shine.

Where do we start? This term has been action packed, from the new appointment of a Head of School to the reuniting of our school community following the return to 'normality' after the last couple of years.

Our school year started in September with Mr Hunter taking the reins at The Avenue. Having taught and held senior leader positions across the area, he arrived in time for the start of the new year. "I believe that a child's time in primary school is fundamental to their educational and life journey, therefore I, and the team at The Avenue, are dedicated to ensuring that our children learn, grow and shine in their own way, every day!"

During the term so far, the school has opened its doors to the wider community. A MacMillan Coffee Morning was held in September with £550 raised for a cause that helps so many people in their hour of need. We have worked with the Nunthorpe Knitters to decorate the planters at the station and in the last couple of weeks, welcomed a well-known bright yellow bear into school.

Despite only being in school for a couple of months, we have successfully competed in a number of local sporting events, winning both girls and boys football competitions as well as cross-country races. Athletics and gymnastics are next on the agenda, and we know the children will continue to represent the school in the best way possible.

It has been a privilege to reunite the school with our community once again and we will continue to work with groups and our families to ensure that our school remains at the heart of our community. *#theAvenueWay*

James Hunter – Head of School

Nunthorpe Academy

Things at Nunthorpe Academy and Sixth Form have been getting off to a fantastic start this academic year, and we're only half a term in! Whether it's the thriving extracurricular clubs and sporting fixtures, to our fantastic, innovative and energetic subject teachers and

leaders, the academy is buzzing with a hive of student activity and personality. A particularly successful achievement, of which the whole of the academy are proud and thankful of, is our recent Hart Gables LGBT Alliance Award of which we were recognised as providing, 'A safer learning environment for LGBT students and staff, something which our Miss Murray and the whole of Team Alliance had a massive part in securing for the academy. Additionally to this, there has already been one of



**Nunthorpe
Academy**

two sixth form open evenings, where prospective students, parents and carers can see what we have to offer in our OFSTED rated 'Outstanding' provision. Included within this article below are two student write ups about why they chose the sixth form, as well as what it is already doing for them and their studies, as they prepare to move on into university and higher education. We hope to continue to have the bounty of successes that we have already had this academic year and wish the whole of the wider Nunthorpe Community, a warm and happy Christmas.

Why I chose Nunthorpe Academy Sixth Form

Taking your next step into higher education can be tough. Whether it's sixth form or college choosing is never easy, trust me I've been there. Thankfully my choice was crystal clear- Nunthorpe Academy Sixth Form. I knew that wherever I wanted to go it had to tick off my mental checklist: great teaching staff and education; a comfortable environment filled with lots of support and plenty of opportunities for me to thrive and prosper. Without a doubt Nunthorpe has all this and more. From its "outstanding" OFSTED rating to its excellent exam results, there was no doubt in my mind that it was the place for me. Currently I take A-Levels in Biology, Chemistry, Mathematics and Spanish and Nunthorpe was one of the only places to offer me the course of A-Level Spanish and also the opportunity to pick 4 A-Levels to widen my options. I'm hoping to pursue a career in medicine, which has its stressful obstacles, and I have already developed a close bond with fellow aspiring medics in our support group created by our dedicated sixth form mentor and I can confidently say I'm in great hands. In addition, as someone who is ambitious and keen to go to a prestigious university, Nunthorpe offers many helpful opportunities such as regular Oxbridge meetings with university ambassadors and extended qualifications that can lower university offers, such as the EPQ (Extended Project Qualification) and the Sports Leadership Qualification.

Although short, so far my experience has been nothing short of amazing: I have learnt challenging yet thrilling concepts, built a spectacular relationship with my form and tutor and most of all made so many great, new friends. If this plethora of positives ticks off your checklist, come to Nunthorpe. I can't wait to see you there!

Ali, Year Twelve

Why I chose Nunthorpe Academy Sixth Form

When deciding on where I would like to pursue my post-16 education, I immediately decided upon choosing Nunthorpe Sixth Form, for an array of different reasons. Firstly, I have always felt welcomed by staff and teachers at Nunthorpe, I liked the fact that they knew who I was already, and I liked the smaller class sizes Nunthorpe has to offer. With these, I feel like my education has already benefited significantly, then if I was to go elsewhere, as it's a more supportive learning environment with fantastic close pastoral support and mentoring. You may think that Sixth Form is just like secondary, but it's not, it's so much more than that. You are treated with so much more respect and finally treated like an adult, and not to mention you have more freedom.

Nunthorpe Sixth Form focuses on what's best for you to succeed, and it works.

Which brings me onto my next point, high results.

The Sixth Form itself has very good grades, which I believe is vital to be looking at when choosing where to go. I shouldn't forget the fantastic incentives which swerved me to join, such as money towards driving lessons. I think it's also important to mention I looked at other sixth forms and colleges, but none of them interested me that much, as Nunthorpe felt like home. Choosing where to go is an important decision to make, so don't take the decision lightly, think about what is best for you and what you want.

Grace, Year Twelve

BLAST FROM THE PAST

A house available for under **£6000** at Chandlers Ridge - if you have a Tardis and can go back to 1969!

Thanks to Luisa Dowson for the donation to the Nunthorpe History Group.

Type No.	Accommodation	No.	Price
<u>Phase 1a</u>			
EV/3	3 bedroom detached house with garage.		£5,450
T/S2	3 bedroom detached house with garage.		£5,450
M5	3 bedroom detached house with garage.		£4,950
All houses in this Phase have gas warm air heating.			

'MARTON MOOR'
NUNTHORPE
AN MRCE DEVELOPMENT

MRCE SALES OFFICE:
Guisborough Rd., Nunthorpe,
Middlesbrough
Tel: Middlesbrough 34105

Local Agents:
MESSRS. SANDERSON, TOWNEND
& GILBERT,
39 Wilson St., Middlesbrough
Tel: Middlesbrough 44181



P.H. SKERRY LTD.

Joiner & Builder

The Skerry name - established in
the building trade for over
50 years

Tel: 01642 319280

Contact Us on
01642 274153
Or Email us at
info@godleyscycles.co.uk



0% Finance Now Available!

- **HYBRID BIKES**
- **ROAD BIKES**
- **MTB BIKES**
- **HELMETS**
- **AND LOTS MORE!**

Bikes from
£250



Godleys Cycles
91 Guisborough Road
Nunthorpe
Middlesbrough
TS7 0JS

NUNTHORPE HISTORY GROUP

History of Nunthorpe. Part 1, Upsall Hall.

In antiquity Upsall belonged to the Percy family whose ancestor, William de Percy came to England from Normandy in 1067 and from whom the Duke's of Northumberland are descended. It passed to the Strangeway family and then to Ralph Rokeby in 1592. In 1799 most of the estate was purchased by William Ward Jackson of Normanby Hall.



Upsall, standing in 40.25 acres of private grounds, was built in 1873 in the popular Gothic style for John George Swan. Legal documents among the deeds of the property show that the estate was transferred to Mr Swan under a ninety-nine year lease with effect from 1st May, 1870 by an indenture between Isaac Henry Tyas of Beauford Buildings, Strand, London, Middlesex, a gentleman, Thomas Emerson Forster of Newcastle upon Tyne, a coal viewer and civil engineer, James Stovin Pennyman of Ormesby Hall, and John Brewster of Middlesbrough on Tees, a gentleman. These four were acting as devisees in trust of the settled estates of William Ward Jackson (born 1778, died 1842).

This lease at a rental of £65 per year, was maintained by Mr Swans widow Mrs Lucy Anne Swan until 18th January, 1924 when she purchased the estate from it's owner Mr Charles Lionel Atkins Ward Jackson. Subsequent to her death at Guisborough on Tuesday 25th September 1928, it passed to her only surviving son John William Swan, the other executors of her will being Thomas Duncan Henlock Stubbs of the Red House, Nunthorpe and Gerald Douglas Cochrane of the Box, Nunthorpe.



The last member of the Swan family to live at Upsall Hall was Miss Lillian F Myra Swan who stayed until 1946 when she moved to Bedford Rd, Nunthorpe and the building was offered for sale.

On 11th of September 1946 it was jointly purchased from J W Swan by David Frederick Goodswen a master butcher and John Salem Tennyson Goodswen a chemist, both of Redcar. This arrangement was destined to be short lived, as both died in 1948 the former on the 28th October and the latter on June 3rd. The property once again changed hands on the 25th November 1948, on being sold by David Alan Goodswen and others to Vaux and Associated Brewers Ltd, of Sunderland who had intended to convert the property into an hotel. Owing to prolonged disputes with the Parish Council who were not in favour of this proposal, Upsall Hall was allowed to fall victim to vandalism and decay, it was rescued from threatened oblivion on being purchased on the 5th of October, 1959 from the brewery by the North Riding of Yorkshire County Council.

Part 2 in next edition of the GNN.

Nunthorpe History Group talks start again

We had an amazing, interesting, fascinating presentation by the Time Traveller, **Martin Peagam** on the subject of **Diet, Disease and Death and Captain James Cook** on Wednesday 19th October. By coincidence, Martin was to meet the Cook Islands Rugby League team (playing in the Boro) at the Captain Cook Museum in Stewart Park a few days later. Captain Cook had visited the Islands and had been very careful in his diplomatic approach - better than later visitors! Note the anti scurvy diet consisted of malted wort, portable soup, sauerkraut and orange and lemon juice.



What does this [house and area] look like now?

Photograph from Jonathan Leyland - one of our regular contributors from Nunthorpe History Group



Harlands Hounds

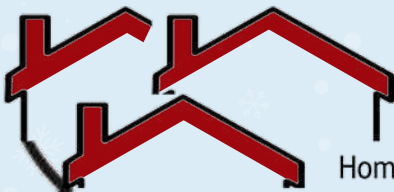


Dog Grooming Services

Ring Colin on 07904813492

93 Guisborough Road

www.facebook.com/HarlandsHounds



S Hill Property Services

Home: 01287 622380 Mobile: 07796 248188

Email: simon.hill1@ntlworld.com



Joinery



Decorating



Building work - internal & external



Pointing - walls/roofs/ridges



Guttering/Fascia Boards

TutorWorks



Contact us now:

07970054713

www.tutorworksltd.co.uk
tutorworksltd@hotmail.com

**GCSE MATHS
GCSE SCIENCE
GCSE ENGLISH**



EXPERIENCED TEACHERS

**A-LEVEL MATHS
A-LEVEL BIOLOGY**



TAILORED PROGRAMME



EFFECTIVE HOMEWORK



FOLLOWING AN EXAM BOARD

Book your FREE trial session today!



Recycle for Charity

Stamps, Coins, Inkjets, Mobiles

Thank you to everyone who has donated their stamps, currency and mobiles to be recycled for charity. I send parcels all year round, so you can let me have donations at any time, my address is 40 Bedford Road, Nunthorpe TS7 0BZ

The stamps, coins and notes - old, current, foreign and UK - go to **The Royal National Institute of Blind People (RNIB)** .

I send all inkjet cartridges to *Recycle4Charity*, who send the proceeds directly to **The Royal National Lifeboat Institution (RNLI)**.

In September a further £22.35 was raised from recycling ink cartridges.

If you would like to check the value of your cartridges go to recycle4charity.co.uk and click on **Collect Ink Cartridges** then scroll down to **Wanted List**. Some cartridges do not have a value, but can still be recycled.

Sorry, but I can't take Laser/Toner cartridges.

These can be recycled through zerowasterecycling.co.uk .

Old mobile phones go to **The Dogs' Trust**.

Anne Graham



WILSON

Plumbing & Heating

Specialists in:

Gas - Oil - LPG - Warm Air - Under Floor

Up to
12
YEAR
Guarantee
on
Worcester
Gas
Boilers



Experienced, Reliable Trustworthy Heating Engineers
Providing a Professional, Quality Service



Call now for a FREE no obligation quotation

01642 487309

www.cawheating.co.uk



AB NEEDALOCK
For a fast and friendly service

AB NEEDALOCK LOCKSMITHS

- . UPVC door and window lock repairs
- . 24 Hour Emergency " Lock-out" service
- . Vehicles opened
- . Lock upgrades
- . No call out charges

For a fast and friendly, Nunthorpe based service with over 25 years experience call Aidan Bell on:

07776258637 or 01642 283215

Email address:

aidan.bell@ntlworld.com

Facebook:

AB Needalock Locksmiths



Michael & Barbara Rea Funeral Service

Independent Funeral Directors

Available 24hrs



- We are dedicated to providing a compassionate and professional service, offering guidance and support through all aspects of arranging a funeral for your loved one.
- Authorised provider of Golden Charter Funeral Pre-payment Plans.
- Memorial headstone service. (New and additional inscriptions)



Great Ayton
74 Newton Road
TS9 6DG
01642 724796

Stokesley
10 Three Tuns Wynd
TS9 5DQ
01642 711999

Darlington
297-299 North Road
DL1 2JR
01325 480000

LETTERS & COMMENTS TO THE EDITOR

Dear Wade,

Sorry I've not been in contact sooner. I wanted to let you know I had a response to the article you published in the Greater Nunthorpe News. My sister and I were highly delighted and surprised with the outcome.

Ivy Blackburn of Nunthorpe phoned me and we had a lovely conversation about my paternal grandfather and his brother Thomas - Ivy's grandfather. We knew we had a great uncle Thomas who worked as a stable lad at Nunthorpe Hall but knew nothing about his family. Ivy has a twin sister and niece, and they remain living in Nunthorpe.

We hope to visit Nunthorpe and meet Ivy next year and talk further about our family history and seek out old photos. We're very excited about meeting her and wouldn't know of the connection without your help.

Thank you again,

With best wishes,



Helen Walker (Blackburn)

GNN is a good read/good balance of content/worthwhile.
Keep up the good work.

Stan Field

I write with reference to the article re. Nunthorpe Practice History on page 25 of Issue 8 of the Greater Nunthorpe News.

Dr George Lowe (Senior), having gained his medical qualification from the University of Edinburgh, was married firstly to my great great aunt, Ruth Maud Willas. They were married in February 1915 in Bingley. Dr Lowe's profession was recorded as a Medical Practitioner and his address was 138 Newport Road, Middlesbrough. I believe that this is the Cannon Park address mentioned in the article. George and Ruth had a daughter in 1917, and sadly Ruth died in 1918 from complications following a miscarriage. George is now recorded as a Physician and Surgeon. The following year, George married Kathleen Lintott, a friend of Ruth's, and they had three children (one of whom died young). The eldest, George Stacey Lowe, followed his father into the medical profession and who was a GP at the Borough Road and Nunthorpe surgeries.

Kathryn Cawood

I thoroughly enjoy reading it but appreciate it takes a lot of time, effort and money to produce. It would be good to get more residents submitting articles as it seems to always be the same few.

Thanks For all your hard work

Jan Dawkins

Hi there Wade. After digesting latest GNN, I wonder if you have any cartographers on the team, as I feel a sketch map - possibly double page? - could be valuable for a future edition. No doubt you have good local maps available for reference, but not everyone is familiar with where Nunthorpe Grange is, or Triangle/Jubilee Wood, proposed Green Link, and maybe other sites/routes regularly referred to. Congratulations on all you've achieved so far, and I certainly endorse the thanks for your commitment to creating a more unified Nunthorpe, despite the borough boundaries!

Best wishes,

Shirley Moore

[Editor : Thanks Shirley – you will see your map proposal is met in part, we hope, with the Neighbourhood Plan map on the front cover!]

An advertisement for Nunthorpe Hair Fashions. It features a woman's face with blonde hair, surrounded by hair styling tools like a hairbrush, scissors, and a hairdryer. The background has a yellow and white striped pattern.

Nunthorpe Hair Fashions
Unisex Hair Salon & Nail Technicians
Open: Tuesday to Saturday
Tel: 01642 316940
Mob: 07969 158916

Pretty Different Nails
Call: 07742 320411

GROCERIES DELIVERED in 30-60 Minutes

Get your Groceries, Snacks, Alcohol
and MORE delivered to your door,
from your local store.



**Download the SnappyShopper
app now & get shopping!**



Alcohol, Soft Drinks, Snacks, Groceries, Baby Care, Household,
Cigarettes & Tobacco, Magazines & Newspapers & Petfood
snappyshopper.co.uk

NUNTHORPE CONTACTS

Nunthorpe Parish Council

www.nunthorpepc.org.uk
clerk@nunthorpepc.org.uk
www.facebook.com/nunthorpeparish
Mrs A Livingstone 01642 274283

Nunthorpe Community Council

www.nunthorpecc.org.uk
info@nunthorpecc.org.uk
www.facebook.com/nunthorpecc
info@nunthorpecc.org

OurGreenways

www.ourgreenways.org
info@ourgreenways.org
www.facebook.com/ourgreenways

NMPFA – Nunthorpe & Marton Playing Fields Association

www.nmpfa.org.uk
www.facebook.com/nunthorpesquashy

Nunthorpe & Marton Recreation Club

Sam Hayton – nmsrc@gmail.com

Nunthorpe and Marton Knitters

www.facebook.com/nunthorpeandmartonknitters

Ormesby Ward Councillors

Cllr Irene Nightingale

161 Ormesby Bank
01642 315565
irene.eos@btinternet.com

Cllr Glyn Nightingale

161 Ormesby Bank
01642 315565
glyn.eos@btinternet.com

Cllr Carole Morgan

17 Byland Road
01642 282109
car02boro@gmail.com

PARISH COUNCIL ROLES

Nunthorpe Development – Adrian Walker, Morgan McClintock & Wade Tovey

Nunthorpe Vision (NPC Reps) – Morgan McClintock & Carol McArdle

Trees, Flowers & Waste Management – Wade Tovey & Russ Lynch

PRoWs & Bridleways – Carol McArdle & Adrian Walker

Traffic – Adrian Walker & Russ Lynch

Crime & ASB – Adrian Walker & Ros Davey

Planning Applications – Carol McArdle & Ros Davey

Constitution & Organisation – Morgan McClintock & Adrian Walker

Communications – Adrian Walker

Nunthorpe Ward Councillors

Middlesbrough Councillor

Mieka Smiles

Mieka_Smiles@middlesbrough.gov.uk

07938 119858

Middlesbrough Councillor

Jon Rathmell

jon_rathmell@middlesbrough.gov.uk

07929 661771



WORD SEARCH

S	C	N	L	G	H	T	R	E	C	L	J	S	D
E	Y	A	R	L	R	A	Y	N	L	E	U	A	Y
L	L	M	R	E	R	E	I	N	O	I	B	N	T
B	L	E	E	O	M	G	E	E	C	L	I	T	I
U	O	K	D	S	L	E	L	N	K	E	L	A	N
A	H	A	N	L	N	S	M	I	L	E	E	Y	U
B	D	L	O	E	M	N	W	B	G	I	E	L	M
S	E	A	S	I	U	O	I	E	R	H	N	E	M
H	C	W	E	G	T	W	N	S	L	A	T	K	O
W	O	E	E	H	U	E	D	H	Y	V	N	S	C
W	R	Y	H	T	A	N	Y	P	C	O	E	C	F
R	A	L	E	R	T	N	E	C	U	S	T	S	E
S	T	E	B	U	C	H	R	I	S	T	M	A	S
N	E	Y	T	S	O	R	F	S	E	V	A	E	L

SLEIGH
SANTA
CENTRE
FROSTY
CHRISTMAS
WINDY
LIGHTS
CAROLS

BAUBLES
HOLLY
COMMUNITY
WET
REMEMBRANCE
GREENLINK
REDNOSE
LEAVES

ELVES
DECORATE
LAKEMAN
CLOCK
JUBILEE
SNOW
AUTUMN
TOYS

Nunthorpe Hall Care Home

Nunthorpe Village



Luxury Retirement and Care in the heart of the countryside

We have over 25 years of nursing and elderly care management experience.

The property stands within extensive grounds of some six-and-a-half acres, and has been sympathetically designed to offer the finest accommodation in the area, allowing residents to enjoy their retirement within the grandest and most spacious day areas available locally.

The Hall's lake and beautiful gardens allow residents and their families to enjoy a lovely summer day in a tranquil location. It also benefits from its own Historic Chapel of St Mary and residents or families may use the beautiful Chapel whenever they wish.

We offer:

- Permanent and respite elderly care
- Grade 2 Listed stately home
- 33 individual luxury en-suite rooms
- Stunning 6.5 acre grounds with lake and gardens
- Private chapel and monthly services in the home
- Full admission assessments with individual person-centred care plan
- Fine dining and Marmadukes Tea Room
- Well-stocked Library

Contacting Nunthorpe Hall is simple, whether it's for an informal chat or you would like detailed information, please don't hesitate to contact us using any of the below:

By Phone: 01642 316611 or 01642 326900

Angela Dixon, Service Director 07748 487910

Email: info@nunthorpehall.com

Nunthorpe Hall Eastside, Nunthorpe Village, Nunthorpe, Middlesbrough TS7 0NP

www.nunthorpehall.com